

City of Sacramento
Active Transportation Commission Report
915 I Street Sacramento, CA 95814
www.cityofsacramento.org

File ID: 2025-00511

2/20/2025

Discussion Item 4.

Overview of Transportation Planning and Equity

File ID: 2025-00511

Location: Citywide

Recommendation: Receive and discuss.

Contact: Jennifer Donlon Wyant, Mobility and Sustainability Division Manager, (916) 808-5913, jdonlonwyant@cityofsacramento.org, Department of Public Works

Presenter: Jennifer Donlon Wyant, Mobility and Sustainability Division Manager, (916) 808-5913, jdonlonwyant@cityofsacramento.org, Department of Public Works

Attachments:

- 1-Description/Analysis
- 2-Transportation Idea to Implementation Illustrative Timeline Graphic
- 3-Transportation Projects Mapped to Equity

Description/Analysis

Issue Detail: The Active Transportation Commission has a number of newer members. This staff report and subsequent presentation to the Commission is to provide an overview of the general process of how an idea for a transportation improvement moves from idea to implementation and how equity informs transportation investments.

Policy Considerations: The Active Transportation Commission was created by a City Council ordinance on January 23, 2018. The powers and duties of the commission are as follows:

- A. Advise city council on the implementation, criteria, and priority of pedestrian, bicycling, and rolling related policies and projects.
- B. Provide input to city council on the pursuit of grant funding opportunities.
- C. Provide input on program development in walking, bicycle safety, and rolling education, law enforcement, and other areas pertinent to walking, bicycling, and rolling in the city.

- D. Review and discuss current walking, bicycling, and rolling issues and advise city council.
- E. Advise city council on the need for periodic updates of the pedestrian master plan and bikeway master plan.
- F. Provide for public participation and involvement regarding the implementation of walking, bicycling, and rolling projects and programs, and other active transportation matters.
- G. Annually, report to and make recommendations to the city council regarding the status of walking, bicycling, and rolling in the city and activities of the commission.

Economic Impacts: None.

Environmental Considerations:

California Environmental Quality Act (CEQA): The item is an overview of existing City processes, and no review or action is requested of the Commission. Environmental review, if appropriate, will be conducted with specific projects.

Sustainability: Not applicable.

Commission/Committee Action: Not applicable.

Rationale for Recommendation: This staff report has no recommendation. The Active Transportation Commission has a number of newer members. This staff report and subsequent presentation to the Commission is to provide an overview of the general process.

Financial Considerations: Not applicable.

Local Business Enterprise (LBE): Not applicable.

Background: There are three significant phases from an idea to a transportation project. Those are:

1. Planning
2. Preliminary Design and Environmental Review
3. Final Design and Construction

Each of these phases can have many steps within, depending on the complexity, scope and length of

the effort. This overview is high level, illustrates high priority efforts, and serves only as an example.

A transportation project starts with an idea. That idea could be from a community member, a business, or a community-based organization. It can also come from a City policy, such as filling gaps in the walking and bicycling networks. Project ideas also come from data analysis, such as crash data.

For an idea to move forward to planning, it should meet the adopted criteria for transportation investments and funding opportunities (R2022-0079) as adopted in the Transportation Priorities Plan (TPP):

1. Improving Air Quality, Climate and Health
 - a. Supports biking
 - b. Supports walking:
 - c. Supports transit or electric vehicles
2. Providing Equitable Investment
 - a. Provides infrastructure in neighborhoods that lack basic infrastructure
 - b. Benefits communities that have been recipients of racism and bias
3. Providing Access to Destinations
 - a. Connects to jobs
 - b. Connects to schools
 - c. Connects to parks
4. Improving Transportation Safety
 - a. Improves a Vision Zero Top 10 corridor
 - b. Improves a Vision Zero HIN Street (not top 10) or is a Vision Zero School Safety Project
5. Fixing and Maintaining the System
 - a. Improves pavement or bridges
 - b. Improves traffic signals

In order for any idea meeting the criteria above to move forward, it must also have funding.

All phases (planning, preliminary design and environmental clearance, and final design and construction) all require funding and are most often funded through competitive grants.

The design, environmental and construction phases are not inexpensive and often require multiple funding sources, multiple competitive grant applications, and it can take years to secure the needed

funding for each phase.

As outlined in the TPP criteria and metrics described above, providing equitable investment is foundational to the City. The Transportation Priorities Plan established equity as:

1. Provides infrastructure in neighborhoods that lack basic infrastructure
2. Benefits communities that have been recipients of racism and bias

That is further defined as:

1. The project is in a neighborhood that lacks basic infrastructure, specifically sidewalks, streetlights, bikeways, trees or traffic signals.
2. The project is in an area that is majority Black, Latino, Asian, Pacific Islander, and/or Indigenous.

Staff have conducted an analysis of planned and current transportation projects and found:

- A. The project is in a neighborhood that lacks basic (transportation) infrastructure, specifically sidewalks, streetlights, bikeways, trees or traffic signals.
 - a. 68% of planned projects
 - b. 96% of priority planned projects
 - c. 69% of current projects
- B. The project is in an area that is majority Black, Latino, Asian, Pacific Islander, and/or Indigenous.
 - a. 69% of planned projects
 - b. 96% of priority planned projects
 - c. 67% of current projects
- C. Areas that are both in a neighborhood that basic (transportation) infrastructure AND is in an area that is majority Black, Latino, Asian, Pacific Islander, and/or Indigenous.
 - a. 45% of planned projects
 - b. 84% of priority planned projects
 - c. 44% of current projects

Attachment 2: Transportation Idea to Implementation Illustrative Timeline Graphic

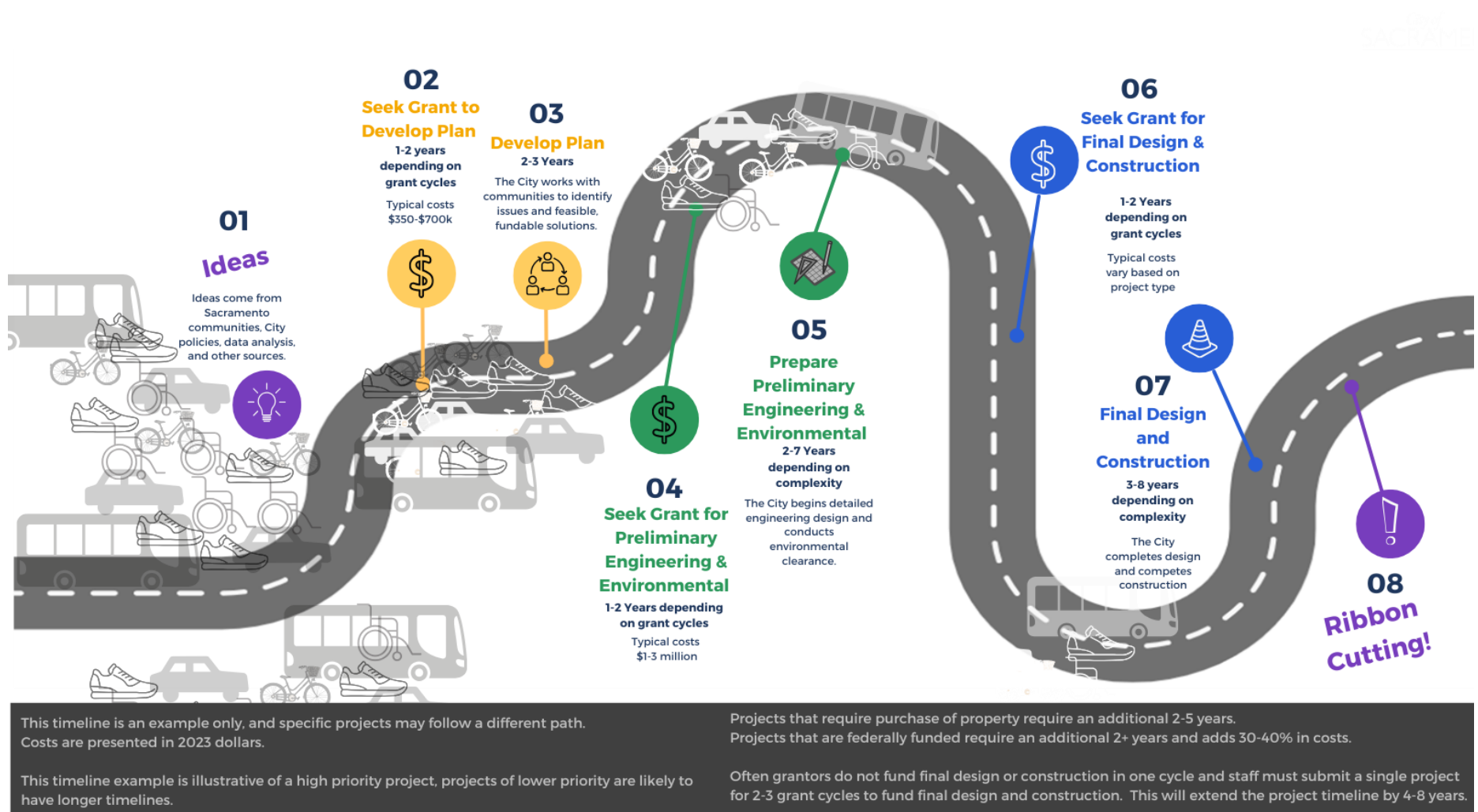


Figure 1: Transportation Idea to Implementation Illustrative Timeline Graphic

Attachment 3: Transportation Projects Mapped to Equity

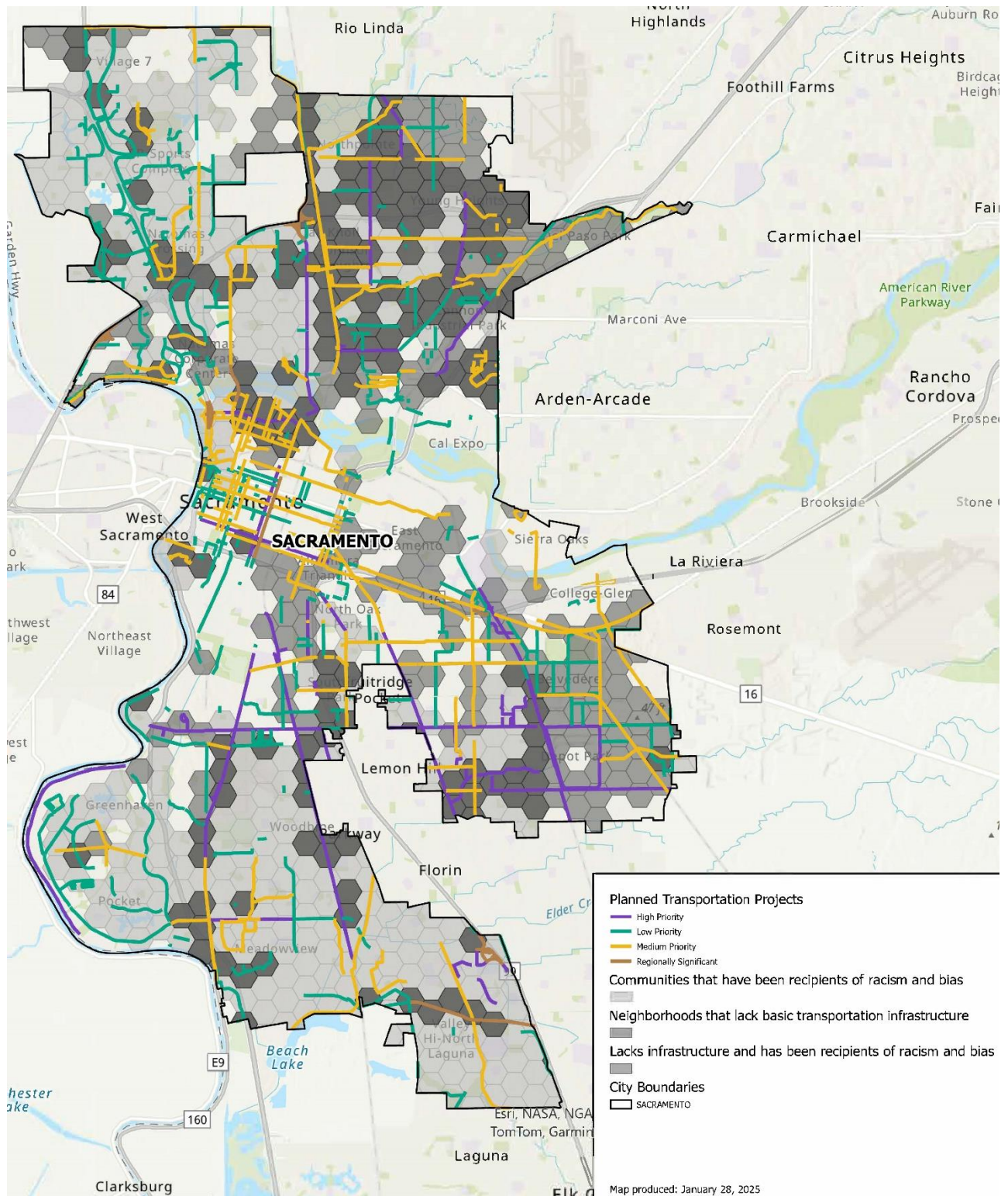


Figure 1: Planned Transportation Projects

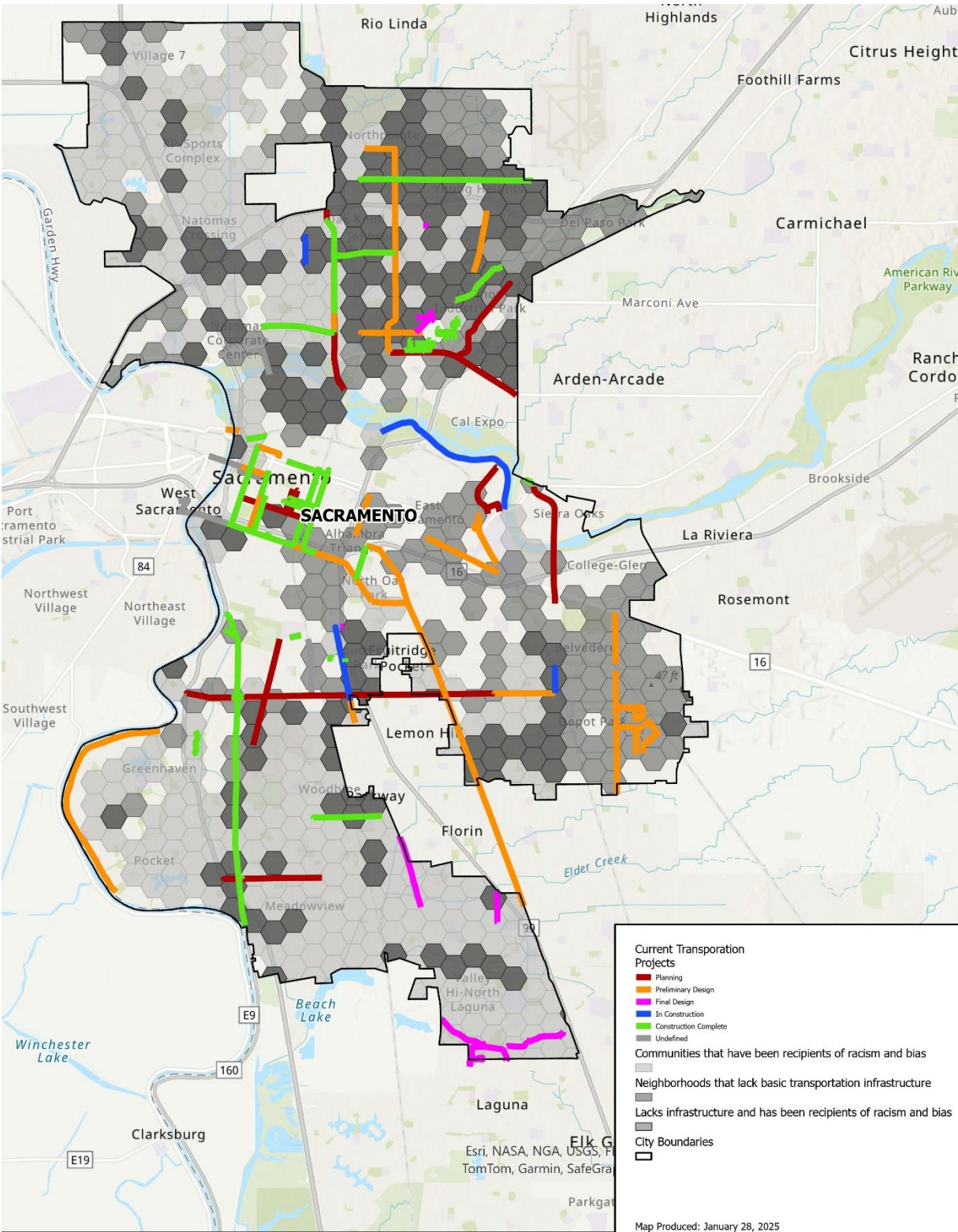


Figure 2: Current Transportation Projects

